

TYPHOON 

QUICK START GUIDE

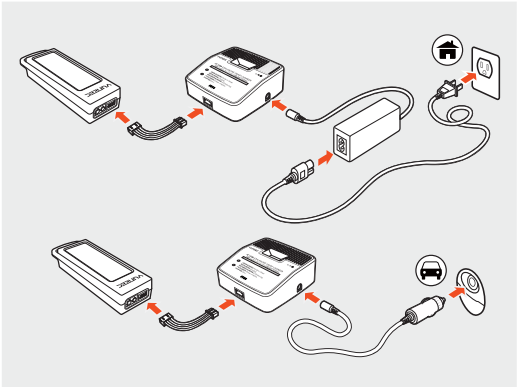
IMPORTANT NOTE:

This Quick Start Guide is NOT intended to replace the content included in the instruction manual. You should read the instruction manual completely before proceeding.

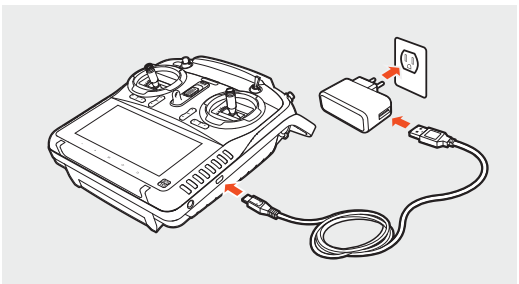
NOTICE: Please find a SD Card in the accessory box. There are tutorial video, electronic user manual and show case in the SD Card.

1. CHARGING THE BATTERIES

Power the SC3500-3 charger from a 100-240V AC outlet using the AC adapter/power supply, or from a 12V DC accessory socket/cigarette lighter receptacle in a vehicle using the included adapter.



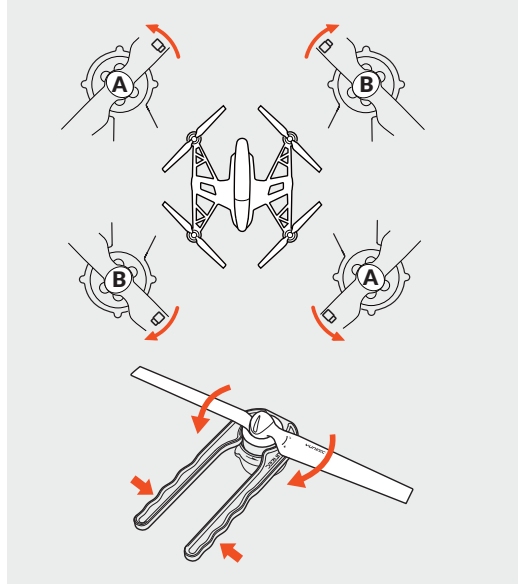
A green blinking LED indicates the charger is powered on and ready to charge, and a red blinking LED indicates the battery is charging. It will take approximately 2 hours to charge a fully discharged (not over-discharged) battery.



WARNING: All instructions and warnings must be followed exactly to prevent property damage and/or serious injury as the mishandling of Li-ion/LiPo batteries can result in fire.

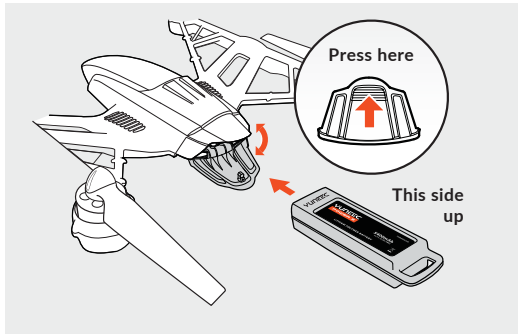
2. INSTALLING THE PROPELLERS

Install the corresponding A and B propellers in the positions shown by rotating them per the illustration and until they're secure. It may also be helpful to use the included tool to hold the motors while installing the propellers.



CAUTION: Do not over-tighten the propellers when using the tool.

3. INSTALLING THE BATTERY

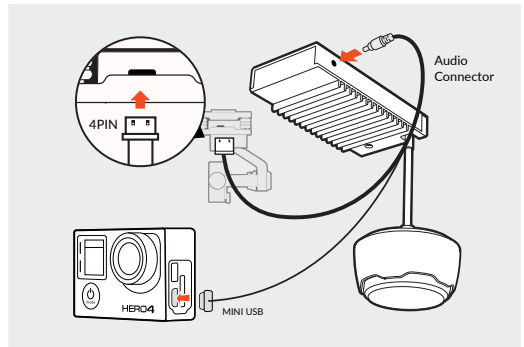


NOTE: If the door does not close, the battery is not inserted far enough to engage the connector properly.

4. PREPARING THE MK58

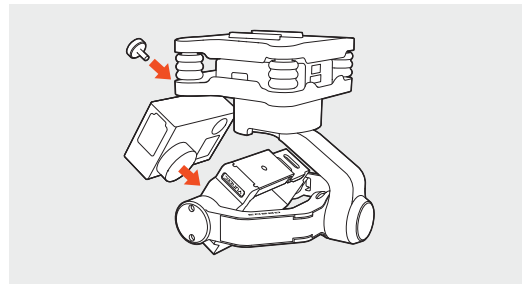
Step 1) Plug the audio connector into audio port of the MK58; then plug the 4PIN power connector into power output port of GB203.

STEP 2) Plug the MINI USB connector into USB interface of GoPro® Camera

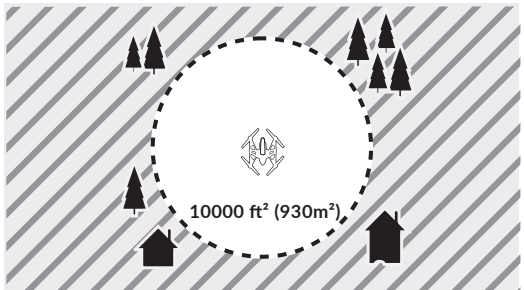


5. INSTALLING THE GOPRO®

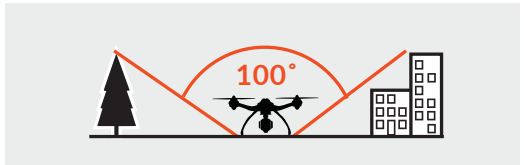
Insert the GoPro® camera into the camera frame on the GB203, then thread the camera to secure position with the retaining screw. Do not over-tighten.



6. PLACEMENT BEFORE TAKEOFF

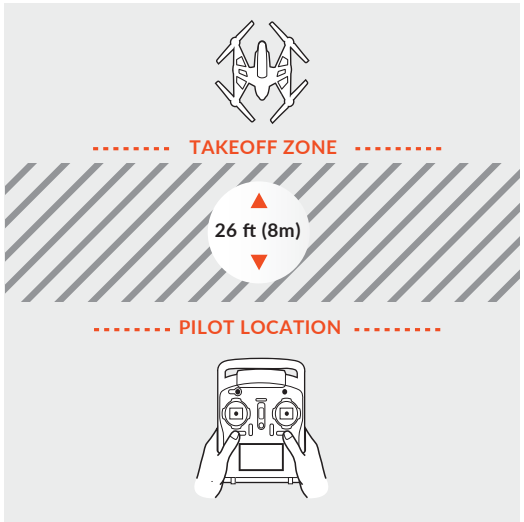


WARNING: Always operate TYPHOON in open areas (approximately 10000 square feet/930 square meters or more) that are free from people, vehicles, trees and other obstructions. Never fly near or above crowds, airports or buildings.



Never attempt to operate TYPHOON nearby tall buildings/obstructions that do not offer a clear view of the sky (a minimum clearance of 100°).

Be sure to place TYPHOON on a level and stable surface before powering ON the Controller and Aircraft.



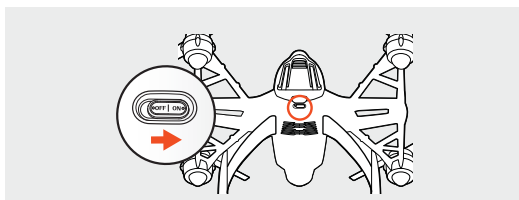
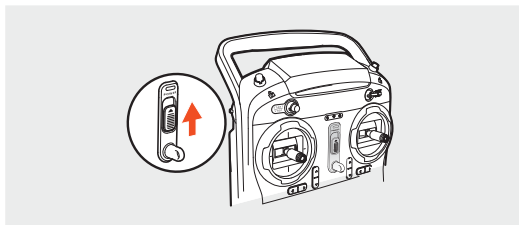
Step back approximately 26 feet (8 meters) behind TYPHOON.

7. POWERING ON/OFF

NOTE: ALWAYS turn the ST10+ on and allow it to boot up BEFORE turning TYPHOON on (and ALWAYS turn TYPHOON off BEFORE turning off the ST10+).

Place TYPHOON on a level and stable surface then slide the switch to the 'ON' position. DO NOT TOUCH OR MOVE TYPHOON UNTIL THE INITIALIZATION

PROCESS IS COMPLETE. The main LED status indicator will glow solid green (Smart Mode) or solid purple (Angle/Pilot Mode) when initialization is complete (and TYPHOON GPS is locked). The GB203 LED status indicator will blink green slowly when initialization is completed. The MK58 will be supplied with power. Then the blue LED of the MK58 is on.



If indoor flight is needed, please turn off the GPS first. Press setting button on ST10+ interface and switch off the GPS.

If calibration is needed before flight, Please press calibration button enables the user to enter Compass calibration or Accelerometer calibration. The detailed calibration operation can be referred to the User Manual on www.yuneeec.com.

8. CAMERA CONTROL

Switch on the GoPro© camera. Please be sure to set video mode for GoPro© Camera BEFORE starting the motors of the aircraft. Any operation related to camera controls should be referred to and downloaded according to the official website of GoPro©. The MK58 from YUNEEC extends the use of the GB203 with real-time image transmission.

NOTICE: If install the GB203 on SteadyGrip, GoPro© APP can be downloaded to achieve real-time image transmission without MK58.

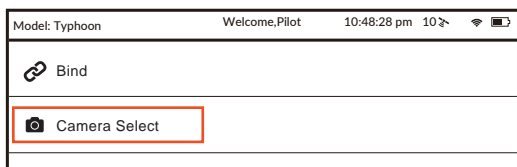
CAUTION: The GoPro© Wi-Fi will interfere with the quadcopter receiver and may cause a loss of signal and crash. Follow the camera instructions to turn the Wi-Fi off before attempting to power on the quadcopter. **Crash damage is not covered under warranty.**

9. BINDING THE MK58

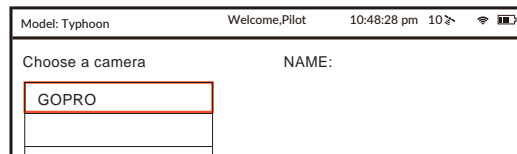
STEP 1) Bind the MK58 to the Personal Ground Station/Remote Controller: Switch on the Personal Ground Station/Remote Controller and tap "Flight Setting".



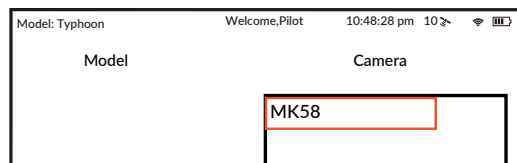
STEP 2) Select "Camera Select".



STEP 3) Select "GoPro", tap "Select" and then tap "OK". Then the Camera Mode is chosen.



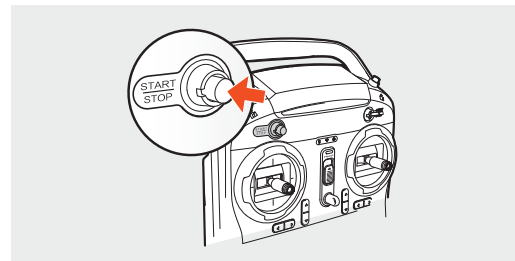
STEP 4) Back to the previous interface and tap "Bind".
STEP 5) Select the MK58 in "Camera" interface.



STEP 6) Input password "12345678" and then tap "OK". The binding succeeds.

STEP 7) After the Ground Station/ Controller and the MK58 are bound, the red LED of the MK58 will blink. Press to return to the main interface of the Ground Station/Controller. The real-time images can be shown on the interface of the Ground Station/ Controller.

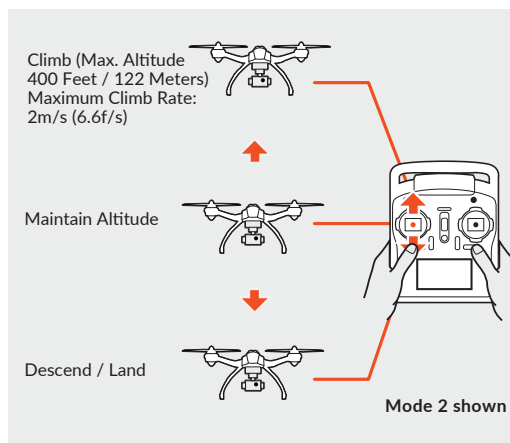
10. STARTING/STOPPING THE MOTORS



Step back approximately 26 feet (8 meters) behind TYPHOON. Press and hold the red START/STOP button for about 3 seconds to start, and about 2 seconds to stop the motors.

11. FLIGHT CONTROLS

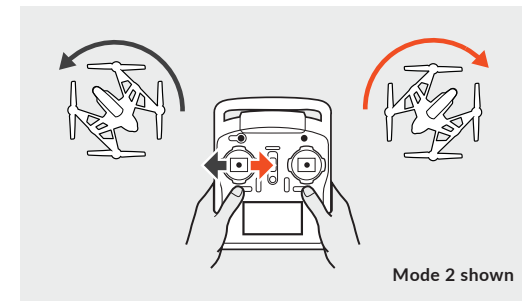
To takeoff, slowly raise the left-hand stick to slightly above the center position. TYPHOON will takeoff and climb slowly (or raise the stick further until it does). Allow the stick to return to the center position when TYPHOON reaches the desired altitude.



FLYING

Take your time learning how TYPHOON responds to various control inputs while flying. In Smart Mode TYPHOON will always move in the direction the right-hand control stick is pushed relative to the pilot and no matter which way the front/nose is pointed. In Angle (Pilot) Mode TYPHOON will move in the direction the control stick is pushed relative to the front/nose of the aircraft (and the 'angle' of movement is determined by how far you push the

stick away from the center position). And please see the corresponding sections of this instruction manual for more information on Smart Mode and Angle (Pilot) Mode.



IMPORTANT NOTE: If at any time during flight you feel like TYPHOON is drifting out of/beyond your control, simply release both control sticks. TYPHOON will automatically self-level and will even hold its position (with a suitable GPS signal/lock) when both control sticks are centered. You can also activate Home Mode so TYPHOON automatically land within 13-26 ft (4-8m) of the pilot.

LANDING

There are two ways to land TYPHOON:

- 1) Position TYPHOON above the area where you would like to land. Slowly lower the left-hand stick to below the center position. TYPHOON will descend slowly and land. After TYPHOON lands, press and hold the red START/STOP button until the motor stop.
- 2) Activate Home Mode and TYPHOON will automatically fly itself back to the home point and will land within a 10 foot (3 meter) diameter circle around it.

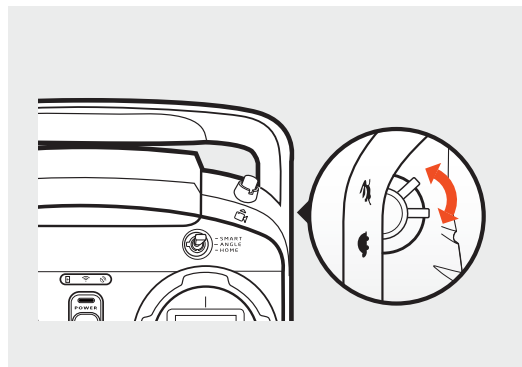
WARNING: Always land as soon as possible after the first low level voltage battery warning, or land immediately after the second level low voltage battery warning (as indicated by the vibrations and audible alerts from the ST10+, and by the Below Motor LED Status Indicators flashing rapidly). And if at any time the Aircraft Battery Voltage shown on the screen is below 10.7V, land TYPHOON immediately.

AFTER LANDING

ALWAYS turn off TYPHOON BEFORE turning off the ST10+. Then remove the battery from TYPHOON and allow it to cool to ambient/room temperature before recharging.

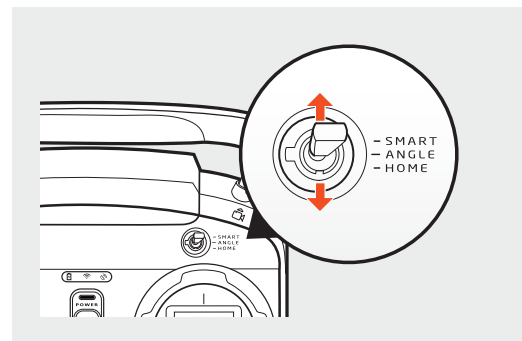
12. CONTROL RATE SLIDER

Set the overall climb/descend and directional control rates. Use the turtle position for the lowest control rates (best for first-time pilots and when flying between 5000 feet and 8000 feet Above Mean Sea Level). Use the rabbit position for the highest control rates (best for experienced pilots and only when flying below 5000 feet AMSL).



13. SELECTING A FLIGHT MODE

TYPHOON is programmed with three (3) flight modes that can be selected via the Flight Mode Selection Switch located just above the right-hand control stick.



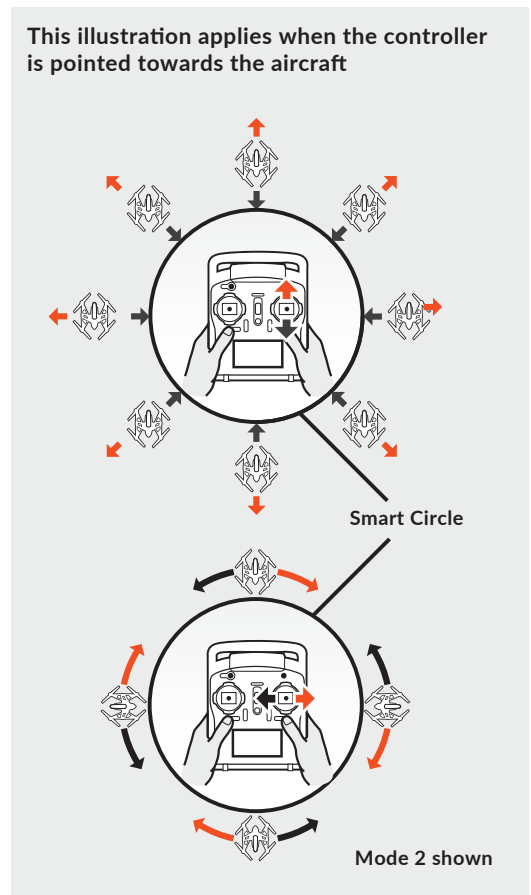
- 1) When the flight mode switch is in the top position TYPHOON will be in Smart Mode.
- 2) When the flight mode switch is in the middle position TYPHOON will be in Angle (also known as Pilot) Mode.
- 3) When the flight mode switch is in the lowest position TYPHOON will be in Home Mode.

14. FLIGHT MODES

SMART MODE



When the Flight Mode Selection Switch is the top position TYPHOON will be in Smart Mode. Although we recommend learning to fly TYPHOON in Angle (Pilot) Mode as soon as possible, Smart Mode is typically the best mode for first-time pilots to fly in and also features 'Follow Me'.

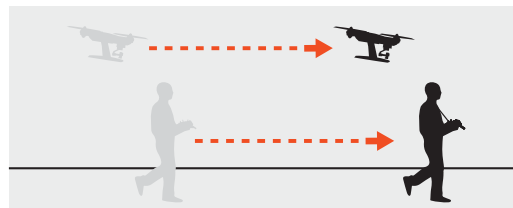
In Smart Mode TYPHOON will always move in the direction the right-hand control stick is pushed relative to the pilot and no matter which way the front/nose is pointed. So if you push the stick to the left TYPHOON will always move to the left, regardless of the direction the nose is pointing and even if it's spinning. This mode can also be helpful for pilots that lose orientation while flying in Angle (Pilot) Mode.



Additional Smart Mode Features:

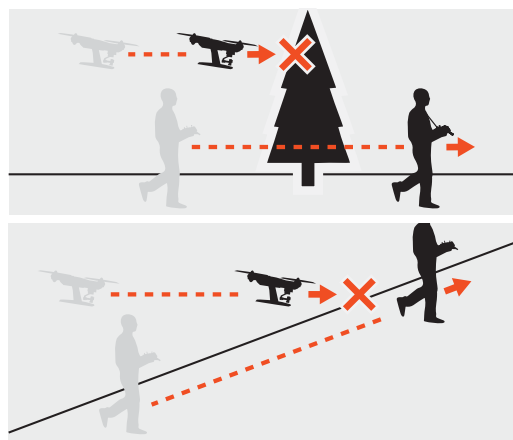
FOLLOW ME FUNCTION

The Follow Me function allows the TYPHOON to follow the pilot, adjusting its location to the location of the ST10+. This function is enabled when ST10+ GPS positioning completes, and the TYPHOON is using shared GPS signal with the ST10+. At this time, you will see orange , and green follow in . When in Follow Me function, the TYPHOON will



follow the movement of ST10+ if there is no extra operation on the ST10+. The flight status is also controllable when you operate ST10+ and GB203.

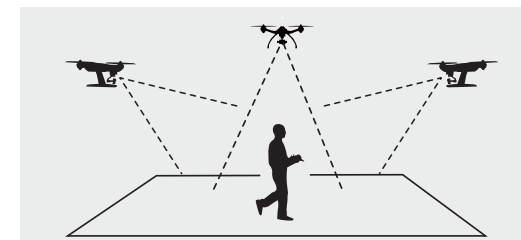
IMPORTANT NOTE: In Follow Me function, the aircraft will maintain a constant altitude and cannot detect obstacles. Pilots who change their altitude by for example, moving to higher ground, during flight should be mindful of this.



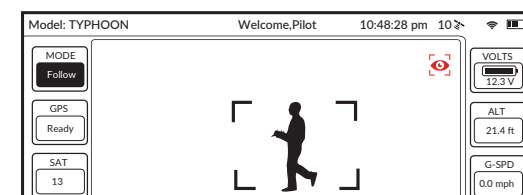
WATCH ME FUNCTION


Watch Me function enables the camera to keep tracking the remote controller no matter where and how it moves as the camera can automatically tilt its angle according to the controller.

Usually, the default function under Smart Mode is Follow Me. Watch Me function can be switched to by following steps:




In Watch Me function, the pilot will always be kept in the frame wherever he moves.



Watch Me/Follow Me Button: When in Smart Mode, press  to switch the TYPHOON between Watch Me and Follow Me function. Follow Me function is the default setting, and the button is ORANGE. If it is GREY, it means ST10+ GPS isn't ready yet. Please wait.



Press , the button will change from ORANGE to GREEN. And now it is in Watch Me function.

NOTE: Once the TYPHOON is above 2m and out of Smart Circle during flying, the TYPHOON yaw direction will take the control itself. Camera lens will always point to you as long as Flight Mode Selection Switch is in Smart Mode. Please put the GB203 Pitch Angle/Position Control Slider in the middle position. If you want to trim camera angle up, then just move the Pitch Angle/Position Control Slider a bit up. If you want to trim camera angle down, just move the slider down.

SMART CIRCLE

In most cases the Smart Circle will keep TYPHOON from coming within approximately 26 feet (8 meters) of you (as long as you position yourself at least 26 feet/8 meters behind TYPHOON).

GEO-FENCE

The geo-fence is a virtual 'barrier' that will keep TYPHOON from traveling further than 300 feet (91 meters). Although this limit can be adjusted using the USB interface/programmer and software we strongly recommend using the default limit at all times.

WARNING: Smart Mode only works when TYPHOON has a suitable GPS signal/lock. If you take off in Smart Mode and TYPHOON loses GPS signal/lock it will switch to Angle (Pilot) Mode automatically. This is why we strongly recommend learning to fly in Angle (Pilot) Mode as soon as possible. Otherwise, if you lose GPS signal/lock and are not able to properly control TYPHOON in Angle (Pilot) Mode the aircraft may crash or even 'fly away'.

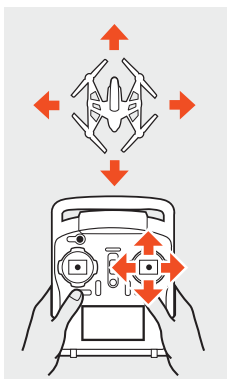
IMPORTANT NOTE: Crash damage and 'fly aways' are NOT covered under warranty.

IMPORTANT NOTE: When the ST10+ Personal Ground Station is connected to less than 6 satellites, the 'FOLLOW ME' feature will be disabled.

ANGLE (PILOT) MODE

When the Flight Mode Selection Switch is the middle position TYPHOON will be in Angle (also known as Pilot) Mode.

Angle (Pilot) Mode is the mode preferred by experienced RC/drone pilots because TYPHOON will move in the direction the control stick is pushed relative to the front/nose of the aircraft. So if you push the right-hand stick to the left TYPHOON will bank toward the left side and move to the left. This means if the front/nose of TYPHOON is pointing away from you it will move to the left, but if the front/nose is pointing at you TYPHOON will move to the right.



Additional Angle (Pilot) Mode Feature:

POSITION HOLD AND SELF-LEVELING

TYPHOON will automatically hold its position (with a suitable GPS signal/lock) and maintain a level attitude when the right-hand stick is centered.

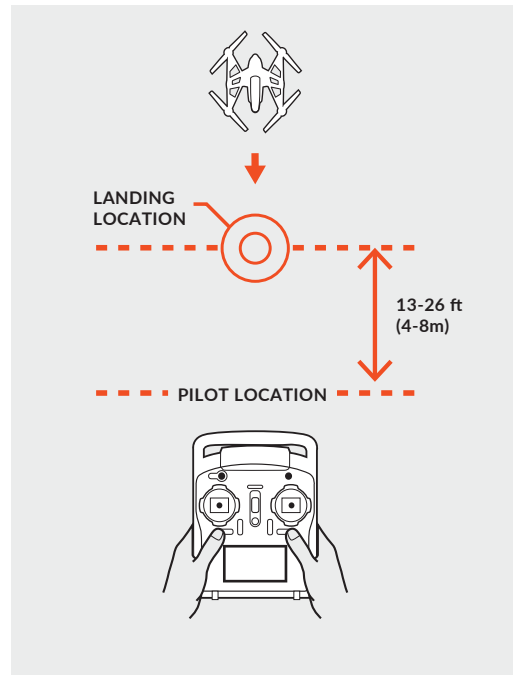
> Mode 2 shown

WARNING: If you do not properly control TYPHOON in Angle (Pilot) Mode the aircraft may crash or even 'fly away'.

IMPORTANT NOTE: Crash damage and 'fly aways' are NOT covered under warranty.

HOME MODE

When the Flight Mode Selection Switch is in the bottom position TYPHOON will be in Home (also known as Return to Home) Mode.

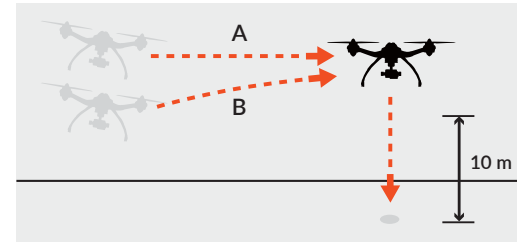


In Home Mode the GPS connectivity will fly back TYPHOON in a straight line in the direction of the pilots' current location, and automatically land within 13-26 ft (4-8m) of the pilot. This can be very helpful for first-time pilots who aren't quite ready to land TYPHOON themselves. It can also be helpful for pilots that lose orientation during flight; simply activate Home Mode until TYPHOON automatically moves toward the home position, and once you've confirmed orientation switch back to Angle (Pilot) Mode. And if TYPHOON ever loses the link with the ST10+ it will automatically enter Home Mode.

When Home Mode is activated TYPHOON will respond as follows:

A) When flying higher than 33 feet (10 meters) TYPHOON will maintain the current altitude, fly back to the home point, or active home point if the ST10+ has enough satellites for Follow Me, then descend vertically until it lands.

B) When flying lower than 33 feet (10 meters) TYPHOON will climb to 33 feet (10 meters) while flying back to the home point, or active home position, then will descend vertically until it lands.

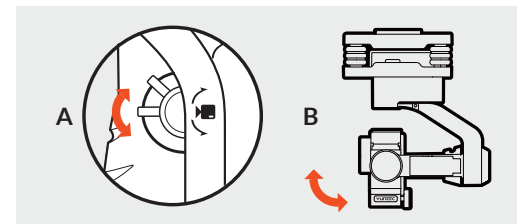


CAUTION: You must be certain there are no obstacles in the 'Return to Home' flight path otherwise TYPHOON may come into contact with them and crash. While TYPHOON is in Home Mode you will have a limited amount of directional control. To help avoid obstacles we strongly recommend to switch to Smart or Angle Mode (then you can switch back to Home Mode).

WARNING: Home Mode only works when TYPHOON has a suitable GPS signal/lock. If TYPHOON loses GPS signal/lock it will switch to Angle (Pilot) Mode automatically. This is why we strongly recommend learning to fly in Angle (Pilot) Mode as soon as possible. Otherwise, if you lose GPS signal/lock and are not able to properly control TYPHOON in Angle (Pilot) Mode the aircraft may crash or even 'fly away'.

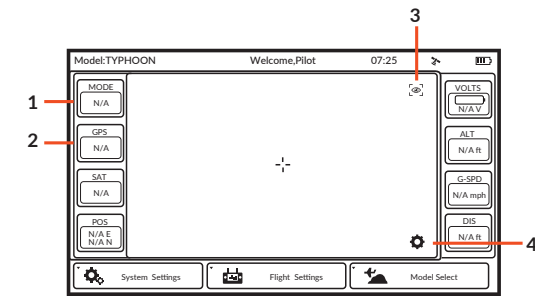
IMPORTANT NOTE: Crash damage and 'fly aways' are NOT covered under warranty.

15. GIMBAL CONTROLS



Use the slider (A) on the left side of the ST10+ to set the pitch/tilt position (B) of the GB203.

16. ST10+ DISPLAY



- 1) Flight Mode of Aircraft
- 2) GPS Status for Aircraft
- 3) Watch Me/Follow Me Button
- 4) In Flight Settings

WARNING: NEVER attempt to fly TYPHOON via First-Person View (FPV). Attempting to fly via FPV can result in a crash that will cause damage to the product, property and/or cause serious injury.

IMPORTANT NOTE:

After flying, turn off TYPHOON BEFORE turning off the ST10+. Then remove the battery from TYPHOON and allow it to cool to ambient/room temperature before recharging.



Double tap the center of the screen to increase the size of the video viewing area.

Any information above might be changed due to the software update. For the latest documents, please check the official website.

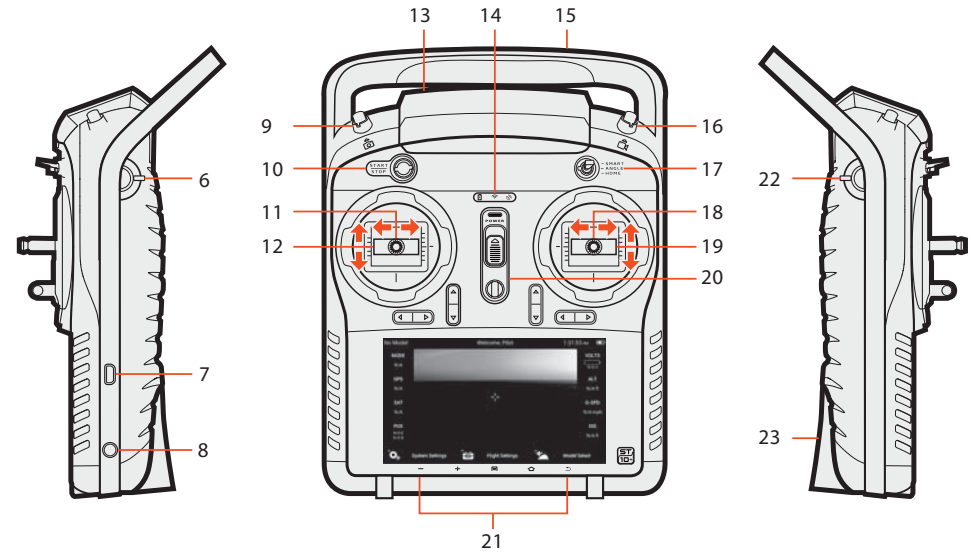
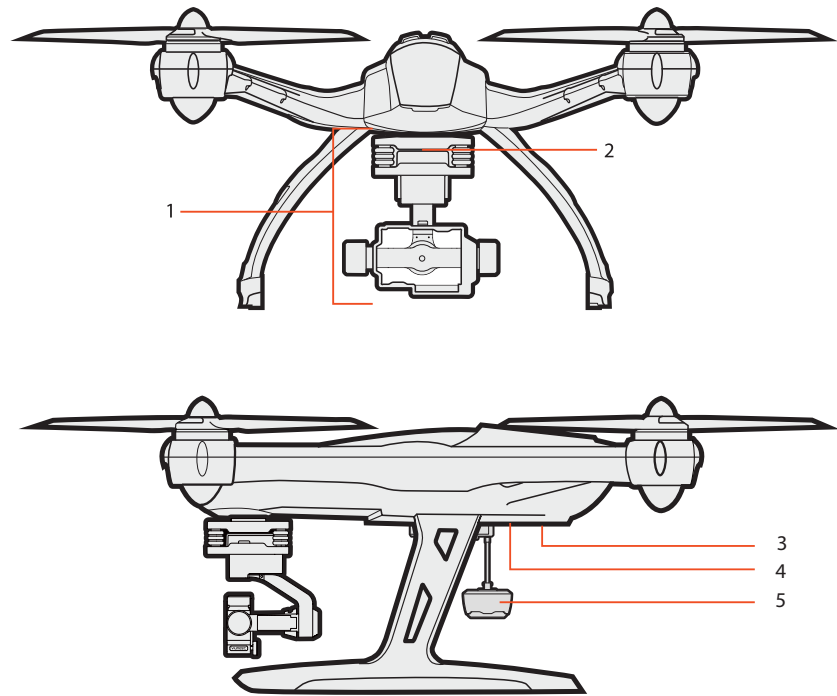
THE FOLLOWING DOCUMENTS ARE AVAILABLE FOR DOWNLOAD AT

WWW.YUNEEC.COM/SUPPORT

- The full TYPHOON G Manual
- Calibration Sheet
- LED Status Indication Sheet
- Graphic User Interface
- Firmware Updates
- Tutorial Videos

YUNEEC
ELECTRIC AVIATION

OVERVIEW



- | | | | |
|------------------------------------|--|--|---|
| 1 GB203 | 8 Audio/Earphone Jack | 14 Status Indicators (for ST10+ battery, 5.8GHz WiFi and GPS) | 20 Power Switch |
| 2 GB203 LED Status Indicator | 9 Take Still Photo Button (disabled) | 15 2.4GHz Antenna (located inside the handle) | 21 Volume and Navigation Touch-Activated Buttons Volume Down/VolumeUp/Menu/Home/Back) |
| 3 Main LED Status Indicator | 10 Start/Stop Motors Button | 16 Start/Stop Video Recording Button (disabled) | 22 Gimbal Pitch Angle/Position Control Slider |
| 4 Power Switch | 11 Rudder/Yaw Control (for Mode 2 and Mode 1) | 17 Flight Mode Selection Switch | 23 SD Card Slot (located under the battery) |
| 5 MK58 | 12 Throttle/Altitude Control (for Mode 2)
Elevator/Pitch Control (for Mode 1) | 18 Aileron/Roll Control (Mode 2 and Mode 1) | |
| 6 Proportional Control Rate Slider | 13 5.8GHz Antenna (located inside the case) | 19 Elevator/Pitch Control (Mode 2)
Throttle/Altitude Control (Mode 1) | |
| 7 USB Connector/Charging Port | | | |

